

Indoor Air Quality in Schools Is Serious

We, team Sensix, believe in green schools, happy and healthy students. Poor indoor air quality in schools can have a negative effect on children's health and academic performance. And we're here to raise this important question: how can we make lasting improvements to IAQ in schools? Because, yes, we can!



School board decision-makers, school designers, and facility managers, we have a problem: poor IAQ can lead to a large variety of health problems and potentially affect comfort, concentration, and staff/student performance. Poor indoor air quality can hasten building deterioration.

School board decision-makers, school designers, and facility managers, there's a solution: understanding the importance of good IAQ in schools and developing an effective IAQ program.

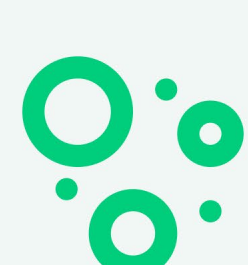


What's IAQ?

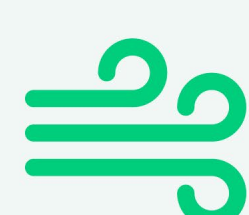
Long story very short, IAQ refers to the air quality within and around buildings and structures, especially as it relates to the health and comfort of building occupants. Understanding and controlling common pollutants indoors can help reduce your risk of indoor health concerns.



The Big Bad Causes Of Indoor Air Problems



Indoor pollution sources that release gases or particles into the air



Inadequate ventilation



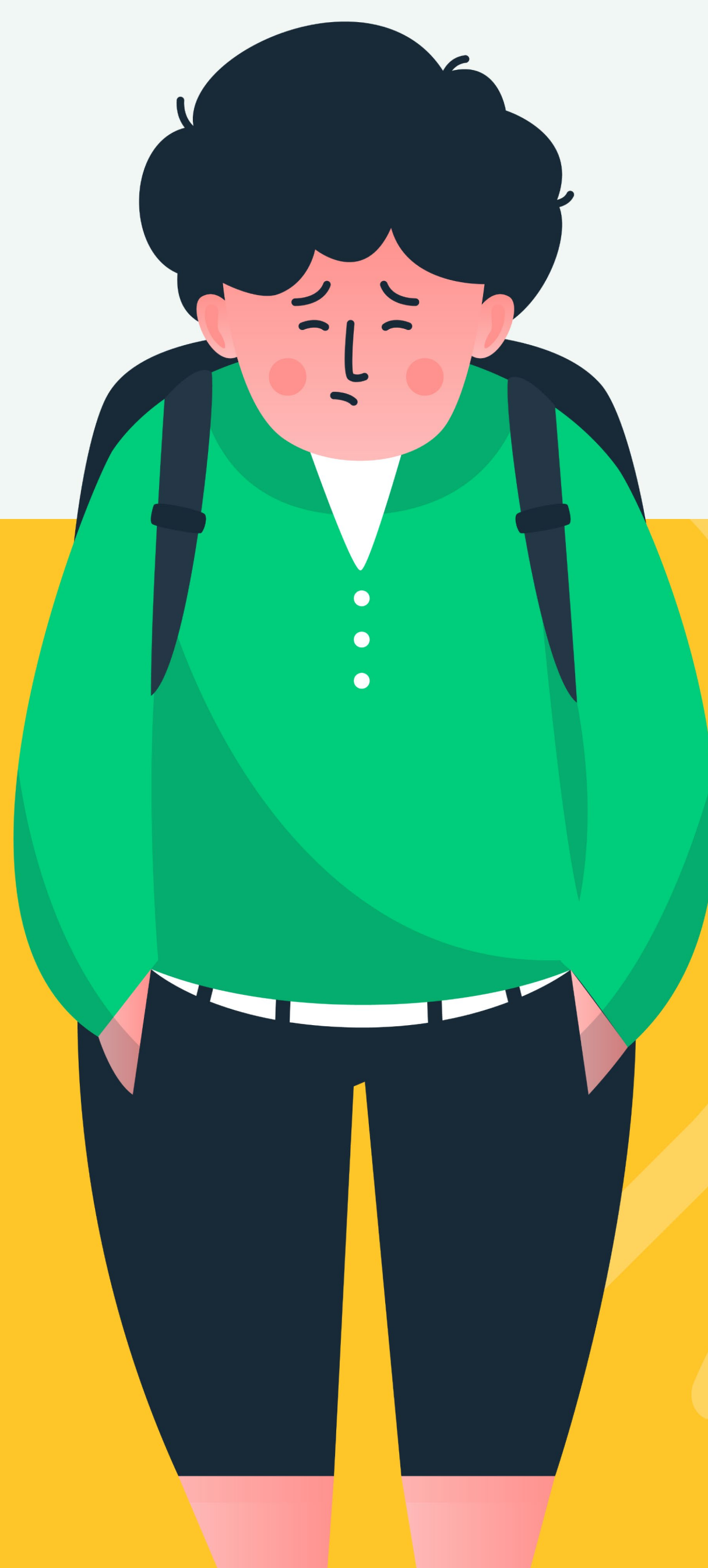
High temperature



Humidity levels

These affect children's health, comfort & performance, being linked to:

- SBS (Shaken Baby Syndrom) symptoms (extreme fussiness or irritability, difficulty staying awake, breathing problems, etc.);
- Symptoms of wheezing (cold, asthma, allergies, or more serious conditions, such as chronic obstructive pulmonary disease - COPD).



Preventing/responding to IAQ problems

ASSESS YOUR ENVIRONMENTS CONTINUOUSLY:

- ⊙ identify pollutant sources, contributors, and IAQ risks;
- ⊙ educate occupants about common IAQ problems;
- ⊙ use monitoring equipment to permanently assess facilities (like Sensix);
- ⊙ gather data on usual performance to identify areas for improvement and to establish metrics for tracking impact over time (determine a baseline);
- ⊙ show the students and staff that you value their health and engage them in the process.



Creating Healthy Indoor Air Quality in Schools

Promote a healthy learning environment at your school to reduce absenteeism, improve test scores and enhance student and staff productivity.

Green school, happy and healthy students. **We can do it!**

Let's start. Drop us a line (or two-three) at say@sensix.io or learn more [here](#)